

# CONVEYOR BELT CLEANER

**SPECIFICATIONS :**

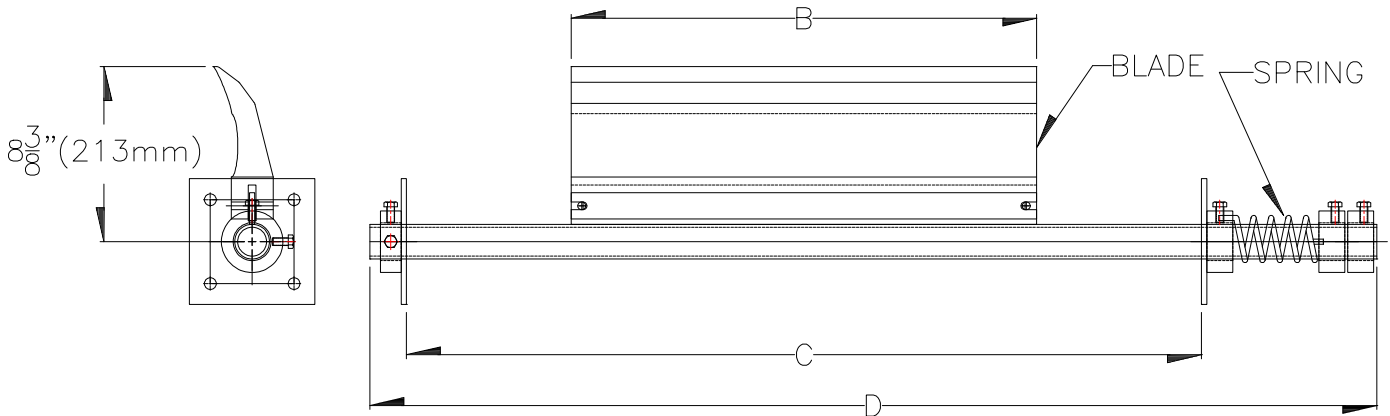
Belt Widths from 18 to 54 in.  
 Maximum belt speed 700 pi/min.  
 Minimum pulley diameter 10 in.  
 Maximum Temperature 212 °F (100 °C)

Steel mounting plates and tensioning system, long wear urethane blade on aluminium support. Urethane is also well known for its high abrasion resistance. The blade can be easily replaced on an existing system.

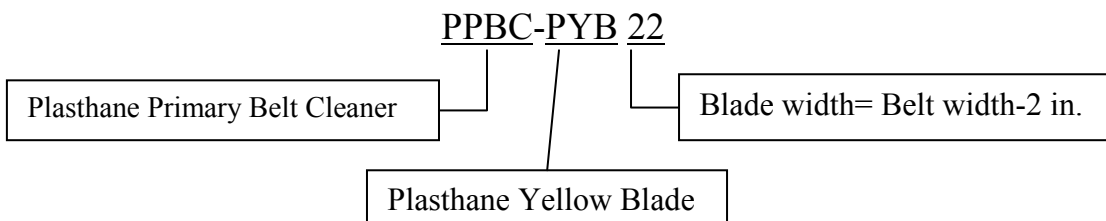


**HOW TO ORDER :**

For best cleaning results and reduced maintenance it is recommended to choose a blade width that covers the material path on the belt, which is typically the belt width minus 2”.



BELT WIDTH po. (mm)	BELT CLEANER DIMENSIONS po (mm)			P.O. FOR COMPLETE SYSTEM *many colors available
	B (BLADE)	C	D	
18 (450)	16 (400)	2'-9"(838)	3'-6 1/2"(1079)	PPBC-PYB16
24 (600)	22 (550)	3'-3"(991)	4'-0 1/2"(1232)	PPBC-PYB22
30 (750)	28 (700)	3'-9"(1143)	4'-6 1/2"(1384)	PPBC-PYB28
36 (900)	34 (850)	4'-3"(1295)	5'-0 1/2"(1537)	PPBC-PYB34
42 (1050)	40 (1000)	4'-9"(1448)	5'-6 1/2"(1689)	PPBC-PYB40
48 (1200)	46 (1150)	5'-3"(1600)	6'-0 1/2"(1841)	PPBC-PYB46
54(1350)	52 (1300)	5'-9"(1753)	6'-6 1/2"(1994)	PPBC-PYB52



**\* COLORS AVAILABLE:**

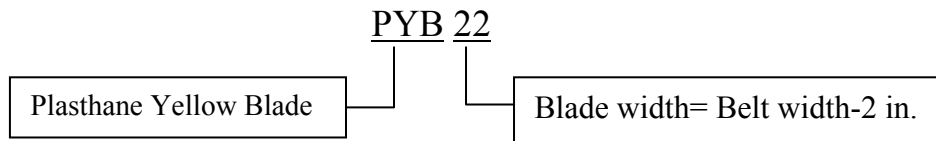
Y-Yellow      O-Orange      BL-blue      V-Violet      R-Red



# CONVEYOR BELT CLEANER

TO ORDER A REPLACEMENT BLADE ONLY :

BELT WIDTH po. (mm)	BLADE WIDTH po (mm)	BLADE P.O. NO.
18 (450)	16 (400)	PYB16
24 (600)	22 (550)	PYB22
30 (750)	28 (700)	PYB28
36 (900)	34 (850)	PYB34
42 (1050)	40 (1000)	PYB40
48 (1200)	46 (1150)	PYB46
54(1350)	52 (1300)	PYB52



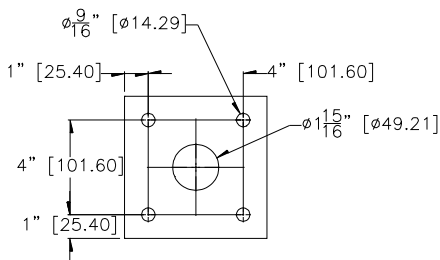
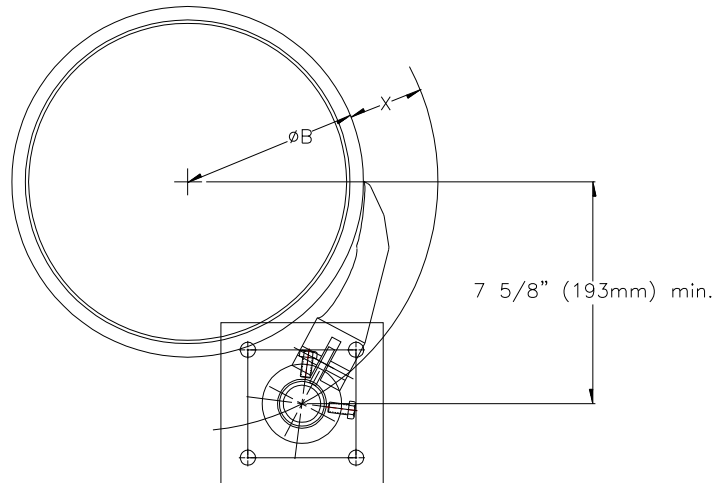
\* COLORS AVAILABLE:

Y-Yellow      O-Orange      BL-blue      V-Violet      R-Red

POLE LOCATION :

- Locate point C at the intersection of an arc of radius B+X (see table 2) and the horizontal line 7 5/8'' below from the center point of the head pulley.

- Take the center point of the belt cleaner to point C and move it down along the arc if necessary. Make sure that the cleaner main frame and blade do not lie in the path of material unloading from the conveyor belt. The blade tip must be at or below the pulley's horizontal center line.



MOUNTING PLATE BOLT PATTERN

BELT CLEANER POSITION	
2xB, $\phi$ PULLEY in. (mm) †	DIMENSION X in.(mm)
10 (254)	3 3/16 (81)
12 (300) and up	2 3/4 (70)
† includes belt and lagging	

TABLE 2